

INDEX

2. Rosemary Shaw Obituary & Little Deers
3. Message from the Vicars
- 4/5 Local Government Update
5. District Councillor Report
6. Parish Council Meetings & Uckfield Model Railway
10. Maresfield Parish Council Newsletter
11. Chailey Repair Café, Ashdown Evergreens & Early Birds
14. Organ Demonstration & Concert
16. Homegroups, Ladies Friendship Group & Leprosy Mission
17. Sunrise Café, Coffee Pop In and Nutley Village Lunch
19. Nutley School & Nutley Pre School
20. Word Search & Crowborough Arts Open Studio
21. Nutley Historical Society & Archives
22. Nutley Memorial Trust CIO
26. Nutley Tennis & Squash Club
27. Nutley Bowls Club & Nutley Horticultural Society#
29. Who's Who in Nutley Church
30. Nutley Directory
31. Juliet Murray & World Day of Prayer
32. Nutley Parish News and Service information





Rosemary Shaw

It is with great sadness, that we announce the passing of Rosemary Shaw at Coniston Court on January 22nd. Rosemary lived in Nutley for many years and was an active member of the church, Pre-school and Horticultural Society.

Nutley Nutkins

Thursday Mornings
TERM TIME ONLY 9.15-11.00am
Maresfield Village Hall

**STAY & PLAY FUN
for Babies & Toddlers**

All welcome to our friendly community led playgroup aimed at babies and toddlers from the area, based in Maresfield, East Sussex. Running on Thursday mornings within term time, our relaxed group is a great place to meet other local parents, grandparents and carers whilst your little ones play. We have a wide range of toys and activities each week and include tea, coffee, biscuits and a healthy snack for the little ones. Come join us for a cuppa!

The cost is £2.50 per family, includes a drink and a healthy snack for your little ones.

**902 BATTs BRIDGE RD, MARESFIELD,
UCKFIELD TN22 2EN**



Message from the Vicars

A MAN HAS BEEN RAISED FROM THE DEAD!

This month millions of Christians will celebrate this fact. At Easter we celebrate that Jesus rose from the dead, 3 days after being crucified on a cross- and that he is alive today.

How about you? Can you believe it?

Nature is trying to tell us this can be true. Every day seems to die only to come back to life every dawn. Trees seem to shed their leaves and die but come back to life in spring. Bulbs and seeds seem dead - then we bury them in the earth and later they spring into new life. Caterpillars appear to die and yet one day their seemingly lifeless chrysalis splits open and a beautiful butterfly emerges.



We are often like these disbelieving caterpillars, unable to grasp that we can have new life with God for ever. God created this world and its beauty and grandeur tell us how amazing he is; it tells us about him and how much he loves us. He sent his son Jesus to live as one of us and to show us and tell us of God's love for us. In the bible we read:

For God so loved the world that he gave his one and only Son, that whoever believes in him shall not perish but have eternal life. John chapter 3 verse 16.

We were created to live life with God, to walk in his ways and when we turn away from God our lives get messy and broken. God wants to save us from all the consequences of our mistakes and bad choices, to guide us to a better way of living. God is love; how wonderful it is that he loves us all unconditionally.

We don't have to wait to have a new life with God, it can start today if we let him into our hearts.

So, say yes to your Creator, our Heavenly Father and belong to his family; start living with meaning and purpose to your life and enjoy the peace in your heart that he offers.

Come on and join us any Sunday to hear more about this man that was raised from the dead and about the difference he can make to your life.



East Sussex services and Council tax next year



There are no new cuts to County Council services in the budget for 2024/2025.

Councillors voted for a £538 million spend on services for East Sussex in the year from 1 April. Almost three-quarters of this money goes on care and protection for the most vulnerable among our families, friends and neighbours - people who may be ill, disabled, frail or suffering neglect or abuse. The council must, by law, provide this help to those most in need.

This means there are limited resources to spend on services we all use - including roads - but councillors also agreed today to consider more spending on highways later this year. I am campaigning hard for a £5m windfall to be spent on roads.

The decision not to reduce services was taken despite the rising cost of providing them and funding not keeping pace. Councillors agreed to use a large part of the council's limited financial reserves to meet the shortfall and, reluctantly, to increase council tax for our services by 4.99% - about £1.62 a week for a typical property.

Outstanding care for children. Could you join the fostering family?

The lives of the most vulnerable children in East Sussex are improved by 'consistently strong and effective' support, an Ofsted inspection has found.

The help, protection and care children and young people are receiving from East Sussex County Council earned the authority an overall 'good' rating, while inspectors found the experiences and progress of children in care to be 'outstanding'. Much of this is thanks to the brilliant foster carers in East Sussex who give young people a loving home and the chance of a better future. They get full support from the council's fostering team and social workers to achieve these results with young people in their care.

Any of us could make great foster carers with this local support and training. If you'd like to find out more about the rewards it can bring information is on the East Sussex website.

Boarding the Bus with 10,000 Passengers

Did you know that 10,000 passengers have already taken a trip on FlexiBus, our on-demand ride-share service, in its first year?

Designed to help connect the most rural corners of the county to existing bus and transport services, FlexiBus helps you get to train stations, high streets, hospitals, shopping centres and more.

FlexiBus runs 7am-7pm, Monday to Saturday. Book via the Ride Pingo app, or call the team on 01273 078203 (9am to 5pm, Monday to Friday).

And don't forget that most single bus trips, on any service, cost just £2. So whether you ride a scheduled service or book a trip on FlexiBus, you can expect a convenient and low-cost journey.

The Wealden Local Plan and the Ashdown Business Park.

Wealden Council has now produced its Draft Local Plan. In some respects, it's not a bad plan but it does propose 342 new houses in Maresfield, 337 in Buxted with just 36 in Danehill, 33 in Isfield and 29 in Fletching. Overall this is too much and our local infrastructure cannot cope.

The main weakness is the Ashdown Business Park expansion which is still very much a live application. Wealden Council says over the 16 years of the Plan the area requires over 170,000 square metres of employment space. Only 85000 is identified in the Plan. It is very difficult to see how the Plan can go ahead without the Business Park.

Details of consultation arrangements will be announced soon and I urge everyone to be vigilant and register their opposition to the unacceptable parts of the plan.

Roy Galley **February 7th 2024**

01825 713018

District Councillor's Report, January—February 2024

Wealden has been allocated £ ½ million from the government's Rural England Prosperity Fund to support local businesses. Grants of between £2,500 and £50,000 are available but have to be matched by the business (so the more you have, the more you get). The scheme is administered by the County Council, not Wealden – apply here:

<http://www.eastsussex.gov.uk/business/support/grants/ruralbusinessgrants>

Applications can be made to the end of the year if the money lasts, but I suggest you don't wait if you're interested.

At a recent meeting of a group of 24 councils (which Wealden co-ordinates) about problems with Southern Water, OFWAT was pressured into agreeing to take a more forceful approach to regulation; in future it won't wait until services have broken down before it checks whether Southern Water has kept its promises.

I am very pleased to report that the Planning Inspector has rejected the developer's appeal about the Downlands Farm site. Her reasons were comprehensive and will discourage any further attempt to put a mass of housing on the site.

Last, but by no means least, the Council voted on Thursday 8th February to send the new draft Local Plan out to you and your fellow citizens of Wealden for consultation. The consultation period will open in early March and continue for 8 weeks. Details will be available shortly on the website and via the My Alerts email. If you can't find them, please contact me. I'll also give more detail in my next article.

Please don't comment until the consultation opens and only by using the stated methods; anything sent in by another method (e.g. to a different email address) will not be taken into account. Please send positive as well as negative comments; the more support individual policies receive, the sooner we can start to use them in making planning decisions. All comments – positive or negative – will be considered seriously once the consultation has closed and will help shape the redraft. I assure you that this will be a serious consultation, not a tickbox exercise.



Ian Tysh 9/2/24

Cllr.ian.tysh@wealden.gov.uk

01825 714639

Maresfield Parish Council Meetings – March 2024

Monday 11th March	Planning Committee (Fairwarp VH)
Tuesday 19th March	Full Council (Nutley Memorial Hall)
Thursday 28th March	NDP Committee (Parish Office) TBC

N.B. Please note that meeting dates are subject to change so please check on the Parish website or call the office beforehand if you are interested in attending.



Uckfield Model Railway Club is holding an Open Day on 6th April, 2024 at the Luxford Centre, Library Way, Uckfield TN22 1AR from 10am until 4pm. Entry is FREE and club members will have model railway layouts working and begiving demonstrations of modelling techniques.



YOGA CLASSES

in Nutley

Join me every Wednesday for Yoga

6.30pm Hatha Yoga for all

7.45pm Gentle Yoga & Meditation

Nutley War Memorial Hall

*Whether you want to increase strength and flexibility, reduce stress,
cure a bad back, try something new or get back into exercise*

- Yoga is for you!

☎ 07816 665823

✉ hello@yogawithadeline.co.uk

🌐 www.yogawithadeline.co.uk





HAIR

by Alice Engwell

CREATIVE COLOURIST
BALAYAGE & RAPTURE HAIR
EXTENSION SPECIALIST

Welcoming new clients with:

20% OFF FIRST VISIT

Salon based in Nutley, East Sussex

MAKE A BOOKING: 07593 980630

FOLLOW HAIRBYALICEENGWELL  



excellence in healthcare for your pet

**FREE HOUSE VISIT ON
ZONE DAYS**

Opening hours
Monday – Friday 8-7
Saturday 9-1

Tel: 01825 766006

reception@theforestvet.co.uk

www.theforestvet.co.uk

24 HOURS A DAY 7 DAYS A WEEK

Unique out of hours service by our Vets at the practice in Maresfield.

We provide the highest level of patient care and customer service.

State of the art equipment including digital x-ray and separate dog and cat wards.

Modern blood analysis laboratory with results in just 7 minutes.

On site Parking.



Chailey Repair Café

We'll fix your clothing/textiles, electrical appliances, computers, bicycles, furniture, sharpening, & household items....

9 Dec 2023, 13 Jan, 10 Feb, 9 Mar, 13 April, 11 May,
8 June, 13 July, 10 Aug, 14 Sept, 12 Oct, 9 Nov, 14 Dec

10am–1pm St Peter's Church, Chailey Green, BN8 4DA



chaileycrc@gmail.com

R. WYATT

Bathrooms, GRP Fibre Glass
Roofing, Tiling,
Plumbing, Decorating.

All aspects of property maintenance and
D.I.Y. undertaken

Fully insured local business

0790 493 7420

royston.rw@googlemail.com

www.rwyatt.co.uk



East Grinstead
MATHS TUITION



One-to-one, in person

maths tuition builds confidence

Arrange your **half-price taster session**

07410 207694

eastgrinsteadmaths@gmail.com

Charlotte Anderson

BA (Hons) Cantab. enhanced DBS checked

JP WINDOW & CLEANING SERVICES

• WINDOWS • CONSERVATORIES • GUT-
TER CLEARANCE/CLEANING • EXTERIOR
CLEANING • PRESSURE WASHING

07810 297600

jackph10@outlook.com

BASED IN NUTLEY · FULLY INSURED
FRIENDLY · LOCAL · RELIABLE

DAVE CORNISH PEST CONTROL

(moles, wasps, mice, rats etc)



Telephone
07718 882478

Head Office
01825 713876



SHORINJIRYU RENSHINKAN KARATE-DO NUTLEY

TRADITIONAL KARATE FOR FAMILIES, CHILDREN AND ADULTS OF ALL AGES.

EVERY SATURDAY | 9:30AM - 10:45AM
NUTLEY WAR MEMORIAL HALL

**CONTACT SENSEI MARC DONFRANCESCO
TO FIND OUT MORE**

07831 858 751

MARC@DONFRANCESCO.COM

RENSHINKANKARATE-EASTSUSSEX.CO.UK

CONFIDENCE | FITNESS | CORE STRENGTH | ACHIEVEMENT

Newsletter from Maresfield Parish Council – March 2024

A few Points and Reminders.....



Wealden's Long awaited Draft Local Plan has now been published. Meetings will be arranged in the near future, for Parishioners to give their views, which the PC will take into account when responding to Wealden in the formal consultation period. The draft plan can be viewed on the Wealden District Council website as follows: [https://www.wealden.gov.uk/councillors-and-committees/wealden-draft-local-plan-regulation-](https://www.wealden.gov.uk/councillors-and-committees/wealden-draft-local-plan-regulation-18-document/)

[18-document/](https://www.wealden.gov.uk/councillors-and-committees/wealden-draft-local-plan-regulation-18-document/)

The grit in the street Grit Bins provided by the Parish Council is for use on the highway and pavements and is not for use on private paths or driveways.

The Red Telephone Kiosk in Nutley is a book exchange/lending facility so please do not place other items such as Jigsaws, Toys, Games etc in the kiosk.

We have issues around horse poo on pavements, so please, horse riders remember that horses by law should not be ridden on the pavement and drivers please, please, drive slowly past horses and give them a wide berth so that horses and riders are not put at risk if they go on the road.

Adult Gym Equipment at Fords Green, Nutley. We are considering installing some adult gym equipment behind the children's playground in Nutley. Before taking this any further we need feedback from residents as to whether this would be welcomed and used and if so what type of equipment would be preferable. Please send your thoughts and ideas on this to the Clerk at the Parish Office. clerk@maresfieldparish.org.uk

Allotments. We are expecting to have some land in Maresfield gifted to the Parish Council in the near future that will include an area for allotments. It is anticipated that preference will be given to residents of Maresfield Village when allocating the allotments and then to residents of the wider Maresfield Parish. If you would be interested in being an allotment holder please register your details with the Parish office.

If you spot anything around our Parish which needs attention do report it to the Parish Office (714555) – we may be able to fix it !

Useful links are:

<https://my.wealden.gov.uk/>

<http://www.maresfieldparish.org.uk/>

<http://www.uckfieldtc.gov.uk/>

<https://www.ashdownforest.org/>

And you can also follow the Parish Council on Twitter and Facebook.

Martin Craddock – Chairman Maresfield Parish Council

(Meeting dates on page 6)



Chailey Repair Café—A record breaking start to 2024!!

Our 2024 dates are easy to remember – we are normally open every 2nd Saturday of each month between 10am – 1pm (9th Mar, 13th April and so on). Our new 2024 posters and flyers with all our dates are now available at the Café, so you won't forget. And don't forget to pick up a free car sticker and one of our smart new bamboo pens so you can spread the word!

Chailey Repair Café is part of a world-wide movement where volunteer experts repair things free of charge – although a donation towards running costs is invited. Anyone can bring along broken items or clothing needing repair from home, and have a cuppa and a cake while they wait.

You'll find us at St Peter's Church, Chailey on the A275 at Chailey Green normally on the second Saturday of each month, 9th March, between 10am and 1pm where we have a full Café service including our legendary cakes!

Contact us at chaileyrc@gmail.com and we'll see what we can do to help.

Ashdown Evergreens in Nutley

Our first meeting of the new year took place on Friday, 2 February in the Memorial Hall. Following the AGM we welcomed Jenny, a volunteer from Chailey Heritage Foundation, who gave a very informative and a little emotional talk on the work and future of the Foundation.

Our next meeting takes place on Friday, 1 March in the Memorial Hall at 2.30pm when our speaker will be Ian Dowding who will tell us how and when the Banoffi Pie appeared on our dessert list.



Afternoon cabaret launches in Forest Row with special offer for over 70s.

The first-of-its-kind EarlyBird Cabaret will launch in Forest Row Village Hall on Thursday 7 March 2024 from 2 - 4pm.



Special priority booking for the EarlyBird Cabaret is reserved for those over 70 and tickets are now available from the Parish Council Office for a suggested donation of £4 (book in person, by phone with Sandra 01342 822661, or by email:

sandra.sameiro@forestrow.gov.uk

RL Computer Solutions



More than
90% of issues
resolved onsite
within 1 hour



Mac and Windows



Home and small business support



Installation, upgrades & repairs
including malware / virus removal



Speed-up & performance solutions



Data recovery and back-up
solutions



Tuition from experienced teacher



High quality broadband



WordPress website expert



Appointment at your premises – no waiting around

Call Roger on: **01342 825 209**

roger@rlcomputersolutions.co.uk

We also provide remote
support for a rapid solution
to many day-to-day issues.

OUR LITTLE DEERS...

Nutley Preschool has been running for over 30 years and provides an exciting, stimulating, secure and inclusive environment, surrounded by our beautiful Ashdown Forest.

Situated at the centre of the village in the Nutley War Memorial Hall, we believe in providing a safe and supportive environment that allows children to take their first learning steps through meaningful play.

We currently have space available for 2-5 year olds and accept funded hours.

ENROL NOW!

Places available

little deers
Nutley Preschool

WE LOVE MUDDY BOOTS AT FOREST SCHOOL!

OFSTED NO. 109472 | REG CHARITY NO. 1028830

LIKE US!
FIND US ON FACEBOOK
NutleyPreschool

To find out more please call us on **07535 655013** or email us at Chair@NutleyPreschool.org.uk www.NutleyPreschool.org.uk



The Realistic Building Company

Your experienced local builders for over 30 years

Extensions, Renovations, Maintenance and Repairs

All work is fully insured

Realistic prices

"Thoughtful approach. We made the right decision"

Client in Tunbridge Wells

"A job well done. Friendly approach and expertise throughout"

Client in Nutley

"Great job. Communicative, responsive, tidy and completed on time"

Client in Sharpthorne

refurbishments

kitchens

bathrooms

shower rooms

"Delighted with the work. Always kept us up to date. Excellent value"

Client in Sharpthorne

decoration

patios

decking

balconies

For a realistic quotation and expert advice for your next building project contact

Giles Casey on

01825 740401 Mobile 07812 579050 email: realisticgiles@googlemail.com



Science tutor

available for years 7 to 11

Many students will find extra tuition very beneficial in getting to grips with the challenges of GCSE biology, chemistry and physics.

With over 25 years' experience in both classroom teaching and one-to-one coaching, I have devised a support course which helps consolidate knowledge and boost confidence.

Cost - £50 an hour and I travel to you.

Contact Gillian on

07450 444916

for
more information



MOTOR SERVICES LTD

MOT • SERVICING • REPAIRS

COMPUTER DIAGNOSTICS

ALL MAKES AND MODELS UP TO
3.5T, INCLUDING HORSE BOXES

COURTESY CAR AVAILABLE

FREE COLLECTION/DELIVERY
IN THIS AREA

Gareth Smith

07500 963711 • 01825 765653

gbamotorservices@gmail.com

2 Panhard Buildings, Bell Lane, Uckfield TN22 1QL

St Andrew & St Mary the Virgin, Fletching, TN22 3SR



**Saturday 20th April
10am – 1pm**

Come and see Fletching's 1880 Forster & Andrews organ

- Learn how an organ works
- See and hear it at close quarters
- Have a go!

Plus

- Displays and videos on the history and workings of the pipe organ.
- Refreshments available



CONCERT - SATURDAY 20TH APRIL 7.30PM



**FROM 'PETIT PAYSAN' TO
PARIS CONSERVATOIRE
DIRECTOR**

**A CENTENARY CELEBRATION
OF THE LIFE AND MUSIC OF
THÉODORE DUBOIS**

PETER BASSETT (ORGAN)

*Free
admission*



*Interval
refreshments*

Retiring collection in aid of Family Support Work



Nutley Memorial Trust CIO

Your local venue for special occasions
charity events and more.

Exceptionally large modern hall for hire by
the hour.

Also available are two smaller rooms for
committee meetings, lunches or classes.

For more information or to make a booking
please contact

Niki on 01825 712465

Visit our website:

www.nutley-war-memorial-hall.co.uk

Find us on Facebook:

www.facebook.com/NutleyWarMemorialTrust



Barcombe Based PEST CONTROL SERVICE

20 Years' Experience

**Rats Mice Moles
Squirrels Wasps**

Competitive Rates

Call Richard

07702 014452

01273 401237

- Felling • Hedge Cutting
- Pruning • Garden Maintenance
- Planting • Firewood and Woodchip
- Stump Removal •

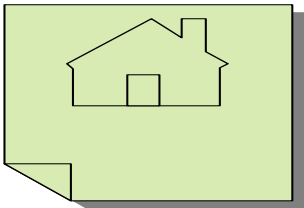
Fully insured work to BS3998

rossgreenwood1981@hotmail.co.uk

Tel: 01825 769681 Mob. 07869 270353



**Ross Greenwood
Tree Care**



Ian Penny

All aspects of building undertaken

**Carpentry Brickwork Stonework
Plumbing Decorating Roofing
Design Hard landscaping**

Mob-07516 982168

*Specializing in older properties
Over 40 years building in this area*



The Monday Home Group will be meeting on Monday 11th March at 10.30am at Theresa Martin's home, Talbots, Ridge Close. On 25th we shall be meeting at Jean Kemm's home, Holtye, Nether Lane.

We shall be looking at women of the Old Testament and the choices they faced, this month Delilah and Jezebel.

For further information contact Jean Kemm (713704).

Midweek Homegroup will meet at 10.30am on Thursday 7th March and on the 21st. Venues to be arranged. We will continue to study the Acts of the Apostles and learn how the early followers of Jesus spread the gospel of Christ from Jerusalem to Rome. We would welcome new members or enquiries – please call Brian Porter (712462) for information.



Home Group West will meet on Friday 8 March at 10.30am at the home of Sally Button, Little Staplens, Nutley and Friday 22 March at 10.30am at the home of Sarah Smith, Guildawn, High Street, Nutley. New members always welcome. Please contact Jackie Norman (712056) for further information.

Leprosy Mission Appeal. Thank you to all those who have supported the mission in the past. Sadly the need is still very great in India, Nepal and Bangladesh. We would be happy to collect any donations you wish to give at the Coffee Pop-in on Wednesday 13th March between 10 and 11am or to me at 3 The Orchard Nutley.

Jo Wright



Ladies Friendship Circle will meet in the church hall on Thursday 14 March at 3pm when there will be a talk by a local Nutley resident, Ron Buchanan. He is going to take us back to the 1950s and 1960s when he was engaged in developing domestic appliances for one of the biggest UK companies. Just try to remember what you had in your home in those times. This meeting is open to all; members free & non-members £3. In addition, could you also bring £2 for the 'money' raffle and £10 which is your subscription for the year ended 31 December 2024. New members are always welcome. For further information please contact Sarah (712143) or Jackie (712056).



Sunrise Café



Sunrise Café is open every Friday during Term Time, from 9am-10am in Nutley Church Hall.

If you haven't visited us before, please pop in and enjoy a FREE cup of tea or coffee with us on a Friday morning; meet new friends, catch up with old friends and if you have pre-school children there are a range of toys, books and games for them to play with while you enjoy some the homemade goodies on offer!

We look forward to seeing you, everyone will be made very welcome.
Valerie & Wendy

Coffee Pop In

Whatever the weather or season, we look forward to welcoming you between 10 and 11 on Wednesday mornings in the Church Hall, to join us for coffee or tea, cakes and a catch up. No charge, donations invited.

More volunteers for baking and serving always much appreciated!

6 th March	Sonja Booy and Jenny Holmes
13 th March	Barbara Newson and Maddie Bladon
20 th March	Carole and Bruce Morley
27 th March	Sally and John Button
3 rd April	Helen and Jock Compson
10 th April	Susan Edwarde and Jenny Holmes



Nutley Village Lunch

A Thank you goes to those who made a contribution at January's lunch. We were able to send £80 to The Hospice in the Weald.

This month's lunch will be on Monday 11th March at 12.30.



Please ring if you would like to join us and if anyone would like to donate a dessert it would be much appreciated.

Sally 712797

SCRUFF TO BUFF DOGS



Grooming & Day Care

Providing a holistic experience for your dog, by a qualified professional.

Based in Nutley

07767 749349

Cooper & Son

Funeral Directors



C.P.J. Field.

More than a funeral director since 1690.

42 High Street, Lewes
01273 475 557

Also at Seaford, Uckfield & Heathfield
www.cpjfield.co.uk

Trevor Mitchell APFS

Chartered Financial Planner
Mitchell Private Clients Limited



Experienced and friendly, local family-man, based in Nutley, providing financial advice to individuals and small businesses including:

**Financial Protection – Investment Planning & Regular Savings –
Retirement Planning – Advice At Retirement – Mortgages –
Ongoing Service.**

Meetings can be held virtually (using Microsoft Teams, Zoom, Skype and others), over the phone or face to face (your home/ place of work).

***** FREE, no obligation, initial 1 hour consultation*****

Contact me on:

07515 927340

trevor.mitchell@2plan.com
www.trevormitchell.2plan.com



Mitchell Private Clients Limited is an appointed representative of 2plan wealth management Ltd. It is authorised and regulated by the Financial Conduct Authority and is entered on the FCA register (www.fca.org.uk) under reference 948369. Registered office: Broga Fach, Llanmadoc, Swansea, SA3 1DB. Registered in England & Wales under no: 12369535

Nutley Church of England Primary School

In March, the year 5 and 6's are going to PGL at Windmill Hill for an activity week. They are adamant PGL stands for Parents Get Lost! All the children will get the chance to try abseiling, go on Jacob's Ladder, try archery and rifle shooting as well as fencing and orienteering! It is an opportunity to become more independent, try new activities, grow as individuals and as friends. It will certainly be quiet in school when they are gone!

The school has appointed Alan, Harriette and Hunter as Digital Leaders to help children and adults with technology and to ensure we all know how to keep safe online.

Last month, as part of their topic on WW2, Badger Class held an exhibition and invited parents to see their work, including the lindy hop and swing dances they learnt in PE. The class became fully immersed in this topic and brought in so many fascinating artefacts, photos and stories from their family history to share.

For more information about our school: www.nutleyprimaryschool.org.uk



Nutley Pre School News

Spring is already approaching, and the Little Deers are beginning to talk about everything that this beautiful time of year brings. This is one of the children's most favourite times of year and they always get to create some great crafts, such as cotton wool lambs and eggbox daffodils.

Easter preparations will soon be underway, and you never know there may even be a visit from the Easter Bunny for the little ones.

We are currently working on organising a Easter Break Bunny Hunt. Please keep an eye on our facebook page at <https://www.facebook.com/NutleyPreschoolPlaygroup> for further details of this and other plans.

We run a play session on Thursdays (term time only) in Maresfield. Please our poster for details. We would love to see you there.

Wishing all our Little Deers and our Nutley friends a lovely start to Spring.

(For more details, see our poster on page 2)



OPEN STUDIOS

7th & 8th September 2024

Calling all
ARTISTS & MAKERS

- professional or amateur -

Would you like to exhibit and sell your work?

Join Crowborough Arts'
OPEN STUDIOS WEEKEND


Please visit www.crowborough-arts.org.uk
for full details and an entry form

CLOSING DATE FOR ENTRIES: 31st MARCH



Scan me!

Whale of a Time



- BALEEN WHALES
- DALL'S PORPOISES
- DORSAL FINS
- DUSKY DOLPHINS
- LAYERS of BLUBBER
- MARINE MAMMALS
- NARWHALS' TUSKS
- OCEAN GIANTS
- ORCA PODS
- TAIL FLUKES

L	T	Y	M	A	I	S	D	D	N	A	E	C	O	E	N
A	C	A	C	A	E	S	O	U	W	S	T	G	N	O	E
S	R	R	I	K	M	L	E	A	S	Q	L	I	G	P	E
R	O	X	U	L	P	M	H	S	S	K	R	L	I	V	L
O	S	L	A	H	W	R	A	N	I	A	Y	A	A	U	A
D	F	F	I	E	L	K	D	L	M	O	T	Y	N	D	B
S	B	N	W	H	A	L	E	S	S	U	P	E	T	M	Z
N	S	B	L	U	B	B	E	R	S	J	N	R	S	Y	I
I	C	W	T	G	O	R	A	K	Q	P	X	S	O	H	S
F	V	U	F	E	L	K	S	D	B	P	O	D	S	P	M

TREE WISE

Tree Services Ltd

Tree Surgery | Hedge Maintenance | Fire Wood
Stump Grinding | Domestic & Commercial Work
Woodland Management | Building Site Clearance
Insured £5m | Free Quotation and Advice

Charlie Layfield | Tel: 07888 838423
Email: charlie@treewise.co.uk | www.treewise.co.uk

Vetted & Monitored by **Checkatrade**

Rupert Thacker

A complete furniture restoration service and suppliers of country furniture

Estimates Free

Tel & Fax: 01825 713111 (Workshop)
Mobile: 07950 035044

e-mail: sales@rupert-thacker.com
web: www.rupert-thacker.com

TJN LOCKS

Tim Norris, Locksmith

MLA trained for all door & window locks
for security & peace of mind

Office: 01342 823 250
Mobile: 07973 600 618

tjnlocks@gmail.com
www.tjnlocks.co.uk
Hartfield Road, Forest Row, RH18 5BZ

From the Nutley Historical Society Archives



In around the 1950's day trips from London to the coast, particularly Eastbourne, were very popular and these coaches, which were then known as charabancs were very different from the modern coaches of today. These charabancs had no 'facilities' on board and a scheduled stop at Nutley was one

of the designated places for passengers to stretch their legs, to use the toilets and to have perhaps a little light refreshment at the Little Chef which was adjacent to the Shelley Arms where there was plenty of parking for these large coaches.

Opposite the Little Chef was Crabbe Island which sold fruit, flowers and chocolates etc and some passengers piled off the charabancs to cross the road to visit the Castle Tea Rooms. The Castle Tea Rooms is where the Indian restaurant stands today, just where the Nutley to Chelwood Gate Road branches off.

This photo is of the staff of Castle Tea Rooms during 1955/56 and left to right are Barbara Brown [Uckfield] Mrs Self, who was the owner, Edna Brown [also from Uckfield], Barbara Mitchell from Maresfield and in the centre Helen Hobbs from Old Forge.

Photos courtesy of the late Peter Kirby.
Jill Rolfe - a member of the Nutley Historical Society.



Nutley Historical Society—Roman Villas in Sussex by David Rudling

David will review results of research into Roman period Villas in Sussex and consider items found at a villa development together with an insight into rural life in Roman Sussex.

Date: Thursday, 28th March at 7.45pm. Free to members, visitors fee £4.

I think you will enjoy the evening. Tony Armistad.

Upcoming Events in Nutley Memorial Hall



Sunday 3rd March 2pm—Jigsaw Competition

Bring yourself or make up a team of four and try to complete a 500 pieces Jigsaw in 3 hours. All welcome, entrance fee of just £5 per person to include snacks, plus tea and coffee. Soft drinks on sale or you are welcome to bring your own alcohol. To reserve your place/team please phone Niki on 07554 010231. Payment by cash on the night.

Saturday 13th April 2 till 4pm—Giant Jumble Sale

50P entrance fee. Feel like a good clear out. Jumble can be left at the Memorial Hall from Sunday 7th April call 07554 010231 or 01825 712465 to arrange for the door to be open.

Nutley Memorial Hall Regular Activities

Please find below details of some of the Clubs and Societies that hold regular classes and events. These Clubs and Societies offer activities and events to suit a wide audience, with new participants always welcome.

Hall Regular Classes and Clubs:

Zumba - Monday 7:00-8:00 sarahdexter@gmail.com

Nutley Rock & Roll - Tuesday 6:30-10:00 nutleyrockandroll@gmail.com

Karate - Saturday 9:30-10:30 marc@donfrancesco.cm

Knit and Natter Thursday 3:30-5:00 donaldandniki@sky.com

Yoga Wednesday 6:30-7:30 and 7:30-8:30 hello@yogawithadeline.co.uk

Evergreens over 55 club - 1st Friday in the month - LizLioydofnutley@gmail.com

Drawing classes with Linda - day and time by arrangement - write2linda@gmail.com

Private Hire of the Hall:

This time of year the Hall provides for a great indoor venue for a children's party or other functions and is equipped with audio-visual equipment that can be used to show films, as well as a large stage for entertainers and lots of space to play and lay tables for party food.

To book the hall for private functions or other events please contact Niki on 01825 712465 or enquiries@nutley-war-memorial-hall.co.uk

Wealden Lottery

The Trustees last year signed up to the Wealden Community Lottery, which was created by Wealden District Council, and launched on 1st March 2023. This lottery was set up as a means to raise money for local community projects and facilities like ours.

If you wish to support the Hall in this way please use the link below to access our lottery website:-

<https://www.wealdencommunitylottery.co.uk/support/nutley-memorial-trust>

RESIDENTIAL CONVEYANCING LASTING POWERS OF ATTORNEY & WILLS

Local, friendly, affordable and approachable specialist solicitor.
Sarah Morgan-Kelly started the practice in Lewes in 2008 and
moved to Nutley in 2017.

We provide a bespoke private client service for local people at
a reasonable price.



80+ google reviews

MORGAN KELLY
— SOLICITORS —
MAKING LAW SIMPLE

Spa Oil
— SERVICES —
HEATING OIL
01892 615400



**All aspects of tree
surgery undertaken**

- Hedge maintenance
- Planting
- Seasoned logs
available

Call Jon Hounsell
01825 873316 M. 07830 154690

jonhounsell@mail.com



The only call you ever
need to make for:

- Heating and Plumbing
- Oil Heating Systems and Tanks
- Installation, Repair & Maintenance
- All Boiler Types & Heating Systems
- Renewable Energy & Solar

EXPERT & RELIABLE

Your Local Family Run Business, serving
our community for **over 35 years**.

For a **FREE**
quote call: **01825 891720**

paynes-heating.co.uk | sales@paynes-heating.co.uk
Oak Tree Barn, Blackboys East Sussex TN22 5JL

Tester & Jones
your local independent
funeral service

We serve the community of
Crowborough and the surrounding area.

Our comprehensive, personal funeral service
is carried out with sensitivity and minimum
intrusion.

- Experienced and caring staff
- Calls taken personally 24 hours a day
- Spacious private car park
- Bereavement Support Group
- Professionally crafted memorials

Crowborough's
only independent
funeral service

Golden Charter
Funeral Plans 

London Road, Crowborough,
East Sussex TN6 2TT
information@testerandjones.co.uk

Call
01892
611811

GSI

Property Improvements

Home improvements & repairs
Bathroom refurbishments & plumbing

**Flooring Electrical repairs;
Painting to plastering;
Fencing to flat pack;**

**Design & construction of tree houses
and pole houses**

For a quote from the company that
cares
call Chris in Horsted Keynes

07899 657722



www.pmfservices.co.uk

Driveway and Patio Cleaning

Pressure Washing

Property Exterior Cleaning

Solar Panel Cleaning

Contact 07872 170586

or email Pete@pmfservices.co.uk

Visit our website for more information or find us on Facebook

RICHARD GREEN

INDEPENDENT, FAMILY OWNED AND RUN
FUNERAL SERVICE & MONUMENTAL MASON

Funerals arranged to your specific requirements

Telephones answered personally 24 hours a day

Flexible pre-paid Funeral Plans also available

125 High Street
Uckfield
TN22 1RN
01825 760601 (24hrs)
uckfield@rgreenfs.co.uk



170 High Street
Lewes
BN7 1YE
01273 488121 (24hrs)
lewes@rgreenfs.co.uk

alexander opticians

- Family Practice established in 1987
- FREE Digital Retinal Photography for All Patients
- Now offering enhanced OCT eye scan
- Contact Lenses and Designer Frames
- Same Day Service on Stock Lenses
- In store repairs
- **FRIENDLY PROFESSIONAL EYECARE**

97 London Road
East Grinstead
RH19 1EQ (Next to Post Office)
Tel: 01342 323115e
Email: alex@alexander-opticians.com



www.alexander-opticians.com



NUTLEY TENNIS AND SQUASH CLUB

Churchfields, Nutley, TN22 3NA

**NTSC are holding their AGM on TUESDAY 5TH MARCH,
6.30pm, Nutley Church Hall**
**We're looking for new Committee Members, so if you'd like to join our
Committee and help shape NTSC, please get in touch**

Squash News

Junior Squash beginner lessons are held every Thursday evening and on Saturday mornings with our coaches Jonny Jones and his father Howell Jones – please check our website for times and details or contact Jonny directly on 07739 359997

Club night for members and non-members is held every Wednesday evening 7pm-9.30pm

Tennis News

Junior tennis lessons are held every Saturday morning. To book any of these lessons please get in touch with George, our LTA accredited coach, on 07920 779386 or email rosstennis@icloud.com. Spaces are limited, so prebooking is essential!

9.15am – 10am	Minis Red Ball Ages 4-7 yrs
10.00am - 11am	Juniors Orange Ball Ages 8-11 yrs
11.10am – 12.10am	Youth Green & Yellow Ball Ages 12-17 yrs

Our Club membership rates are very competitive: -

Junior Membership £7.50 per month (under 12s living in Nutley, free for tennis)

Adult Membership £24 per month /Senior Membership £13 per month

Family Membership £36 per month

Tennis Only Adult Membership £9 per month

If you're not a member, you still can enjoy lessons or pay and play – see website for more details.

Nutley Tennis and Squash Club <http://nutleytennisandsquash.co.uk>.

General info: Chris Williams chris.dwilliams@btinternet.com

Nutley Bowls Club

The club will soon be starting its 109th year at the Littlemead ground tucked away off the main road in Nutley (near the Nutley garage) and rented from the Nutley War Memorial Trust. It is a small friendly club where all the maintenance, gardening and greenkeeping is carried out by a group of volunteers from within the club.

Over the summer season we play over 36 games on a home and away basis with clubs around the area. Most of the games are friendlies so there is plenty of opportunity to play the game. It is gentle exercise, sociable, an opportunity to visit other clubs and overall it is not an expensive activity.

Unfortunately, membership of our club, like many other clubs, has been declining over recent years so we need new members. Every year we advertise for new members to join us. If you have never played bowls before do not let that worry you as we have a qualified coach who can help.

Our open days for you to "have a go" will this year be Sunday 21st April and Sunday 19th May. If you cannot get to the club on either of these days you can always call in on any Tuesday morning when maintenance is carried out or you can call Mike Evans on 713691 or Peter Lambert on 713588.



Nutley Horticultural Society

The Horticultural Spring Show is on Saturday, April 6th, in the Memorial Hall; setting up from 9.30 to 11.00, open for viewing from 2.00 to 3.30, prize-giving at 3.30. This year's Schedule, plus exhibit entry forms, can be downloaded from our web site www.nutleyhorticulturalsociety.co.uk. All entry forms for the Spring Show must be submitted to Claire Sullivan (Ridgefield, Nether Lane) not later than 6.00pm on Thursday, April 4th.

There will be a raffle, and refreshments will be available. Come along and enjoy the Show.



The Horticultural Society has joined the Wealden Good Causes Lottery group. A weekly draw takes place every Saturday. From every £1 ticket that you buy, 60p will go towards good causes in the Wealden District. Donors' cash prizes can be very substantial. Further information obtainable from Wealden Community Lottery website:

www.wealdencommunitylottery.com

Claire Sullivan

01825 712316



For All Your Vehicle Requirements

All Cars, Light Commercial Vehicles & 4x4's

MOT Testing Station

Servicing and Repairs

Tyres - Puncture Repairs and Replacements

4 Wheel Laser Alignment

Welding, Fabrication and Anti-Corrosion Treatments

Air Conditioning Services & Re-Gassing with New R1234yf Gas

Hydrogen Engine Carbon Clean for DPF, Turbo, EGR Vales and Injectors
And More...

Highstreet, Nutley, TN22 3LP

TEL: 01825 712 382

www.nutleymotorservices.com



P. MOULT & ASSOCIATES

YOUR LOCAL

PAINTERS AND DECORATORS

25 YEARS' EXPERIENCE

FREE ESTIMATES

O.A.P. DISCOUNTS

ALL INTERIOR AND EXTERIOR WORK UNDERTAKEN

TEL MOBILE: 07884 342137

Who's Who at St James the Less

Vicar: The Revd. Ben Sear: Tel: 01825 508352;
email: vicar.maresfieldandnutley@protonmail.com

Associate Vicar: The Revd. Pauline Ingram, Tel: 07751 729049
Email: revpingram@gmail.com

Church Administrator: Angie Welton Tel: 07745479407
Email: admin@maresfieldandnutleychurches.com

Reader: William King

Church Wardens: Liz Kosh 07889502542 and
Ray Kennedy kennedyshome@icloud.com or 01825 712050.

Parochial Church Council: Rev Ben Sear, Rev Pauline Ingram, Susan Edwarde (Treasurer), Liz Kosh (Churchwarden), Steph Hacker, John Hacker, Valerie Williams, Pam Marsh, Jamie Slater and Ray Kennedy (Churchwarden).

Safeguarding Officer: Pam Marsh (712035)

Electoral Roll Officer: Jackie Norman (712056)

Treasurer: Susan Edwarde (713015)

Church Choir: Pam Marsh (712035)

Flower Rota: Coral Hills coralhills@icloud.com

Coffee Pop In Rota: Helen Compson (712679)

Church Hall Bookings: Carole Morley (712349)

Verger: Jackie Norman (712056).

Family Worker: Sophie Leach (sophie.families.worker@gmail.com)

Home Groups: Monday morning: Jean Kemm (713704)

Midweek: Brian Porter (712462)

Home Group West: Jackie Norman (712056)

We welcome families of all ages to our church, including those with young children. During the Sunday 9.15am service we offer a crèche for the youngest ones and Sunday Club for older children aged 4-12. Alternatively, you can have your child in with you and make use of the large carpeted area at the back of the church with toys and books.

The Clergy hope to be told of illness, bereavement or trouble, for prayers and visits.

Nutley Directory

Ashdown Forest Tourism Association - 713862
 Church Hall Bookings - 712349
 Conservators of Ashdown Forest - 01342 823583
 Ford's Green Management Committee - 712209
 Maresfield Parish Office - 714555
 Memorial Hall Bookings - 712465
 Memorial Hall Trust Committee - 712465
 Nutley Church of England Primary School - 712575
 Nutley Hall Residential Community for Adults with Learning Disabilities - 712696
 Nutley Nutkins -713753
 Nutley Pre-School Playgroup - 07535 655013
 Wealdlink Community Bus [Door to Door Shopping service] - 01892 771332

Sporting and Social

Ashdown Evergreens - 714609
 Ashdown Forest Fine Arts Society - 01342822435
 Bowls Club - 713588/713691
 Short Mat Bowls Club - 713228
 Cricket Club - 763925
 Extended Exercise Class 714797 / 712143
 Football Club - chair@nutleyfc.co.uk
 Historical Society - 712336
 Horticultural Society - 712316
 Ladies Friendship Circle - 712056
 Nutley Windmill 01435 873367.
 RNLI Forest Row - Jill Sharp 01342 826848 or jjsharp611@gmail.com
 Royal British Legion Nutley Women's Branch - 712239
 Social Club - 712220
 Stoolball Club - 764824
 Table Tennis Club - 714797
 Tennis and Squash Club -07788 713707
 Zumba Fitness Club-714633

Restaurant and Tea Rooms

La Casa Ristorante Pizzeria - 713566
 Hathi - 713287
 Premier Village Stores - 712501
 Wych Cross Nurseries - 01342 822705



Talented local Artist, Juliet Murray

(Note from the editor: Artwork used to illustrate “The Arts Society Ashdown Forest” article in February is by Juliet Murray and not Jo Walton)



Juliet has lived in Nutley for many years and says “Ashdown Forest has always been special to me and I strongly suspect I would not have been an artist at all if it wasn’t for the inspiring subject matter right on my doorstep. Even on the gloomiest of days there is artistic treasure out there waiting to be discovered”.

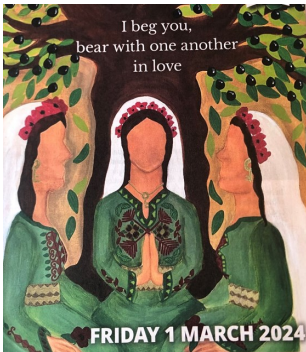
Contact & Visiting Info:

Juliet’s Studio/Gallery in Clockhouse Lane, Nutley is open by appointment

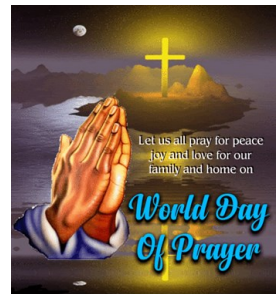
Contact Juliet on 01825 712565/email juliet@cogcraft.co.uk.

Further details and online gallery: <https://cogcraft.co.uk>

World Day of Prayer—1st March 2024



We would like to invite you to Nutley Church on Friday 1st March at 2.00pm for this year’s World Day of Prayer service. This year, the service has been prepared by Christian women from Palestine.



Nutley Parish News

Published by the Parochial Church Council of the Church of St James the Less, Nutley on the 1st of each month.

Final Copy Date: Friday, 8th March 2024. Please send your articles by this date to ensure being included in the magazine. If you know you will be late, please contact Angie, who may be able to hold up the print deadline.

Editor: Angie Welton, 5 Lower Drive, Maresfield Park, Maresfield, TN22 2BW. admin@maresfieldandnutleychurches.com (tel: 077454 79407)

Advertising: Jo Mumford, Yew Tree Cottage, Forest Bank Tel: 01825 713606 joanamumford@btinternet.com

SUNDAY SERVICE INFORMATION AT NUTLEY CHURCH

1st March	2pm World Day of Prayer	
3rd March	8am BCP	
3rd March	9.15am All Age Service	
9th March	9—10.30am Dads & Tots	
10th March	9.15am Holy Communion	
	Mothering Sunday	
17th March	9.15am Holy Communion (Sung)	
24th March (Palm Sunday)	9.15am Café Church	
 28th March (Maundy Thursday)	7pm Supper (Maresfield church)	
29th March (Good Friday)	2pm An Hour at the Cross	
31st March (Easter Day)	9.15am All Age Holy Communion	

Weekly Morning Prayer in church at **9am** on Thursdays
Church is open Monday—Saturday from **9am—5pm** and for services on Sundays

Opinions expressed by contributors and services and products offered by advertisers are not specifically endorsed by Nutley Parish News or the Parochial Church Council of the Church of St. James the Less

Church Website: www.nutleychurch.org